



LIVE HAPPY

Mind Management



MANAGE YOUR MIND ON GOOD & BAD DAYS!

Manage your mind by staying aware of your thoughts without judgment.

On good days, practice gratitude and stay grounded.

On bad days, accept emotions, slow down, and focus on small actions.

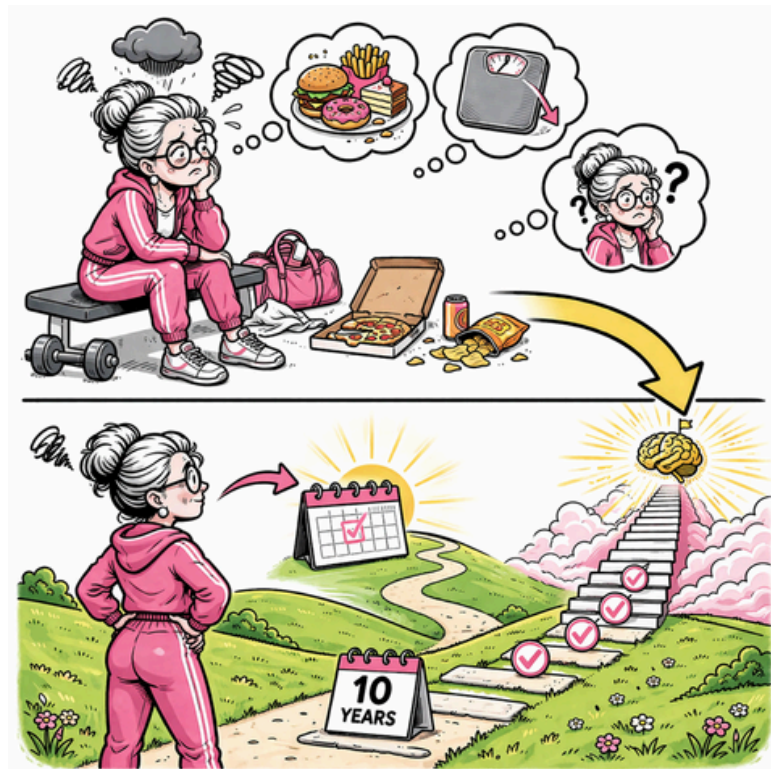
Consistency, self-compassion, and reflection help build resilience and mental balance over time.



THINK IN DECADES NOT DAYS

You feel frustrated after missing workouts and overeating and questioning whether you've undone progress and wondering is it worth continuing anymore.

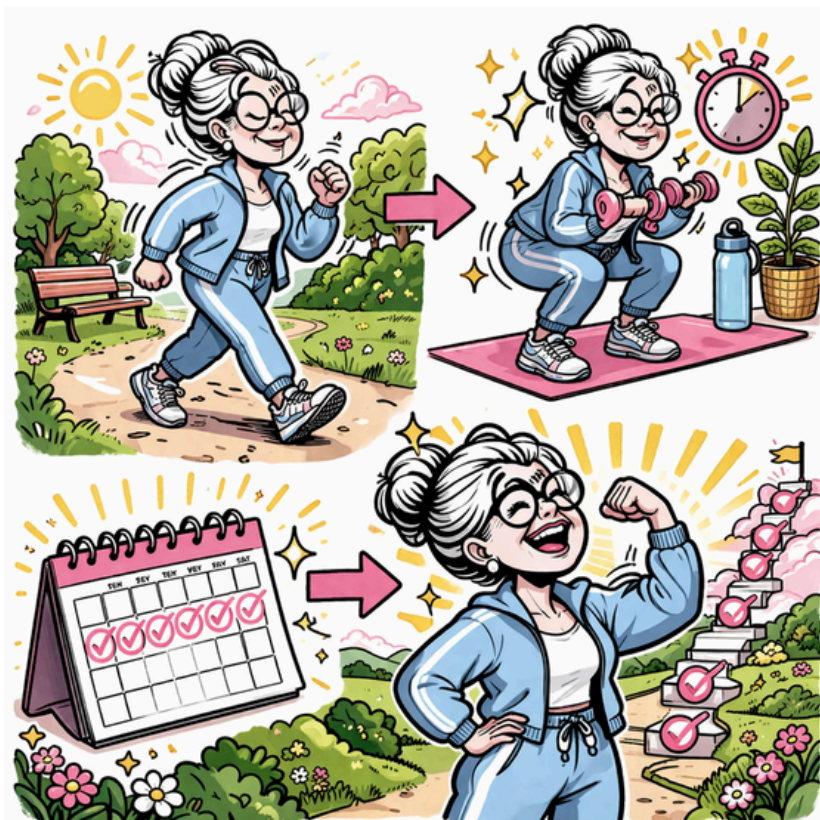
Think long term. One week doesn't define your health. Focus on returning to your habits tomorrow and building consistency over the next decade.



REDEFINE SUCCESS AS CONSISTENCY, NOT INTENSITY

You skip exercise because you don't have time for a full workout, thinking anything less than your usual routine isn't effective or worth the effort today.

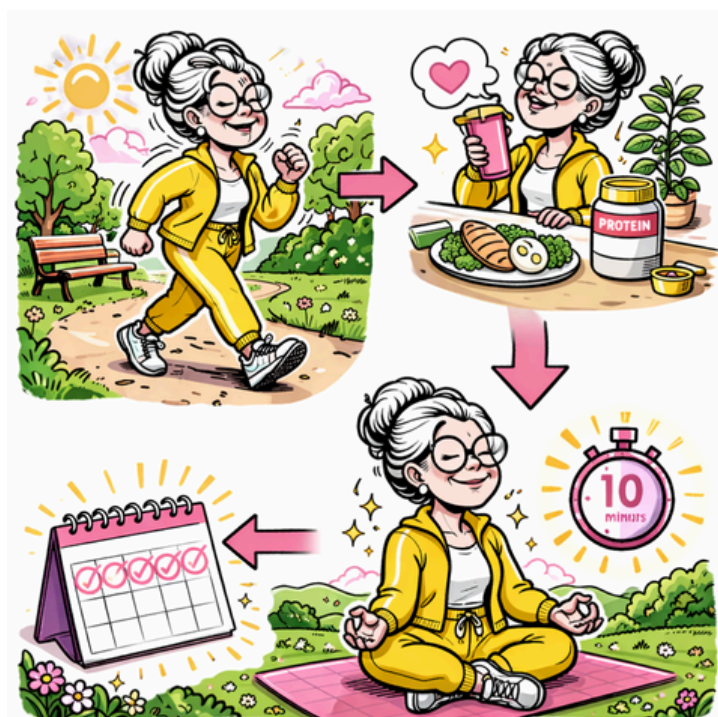
Remind yourself that something always beats nothing. Do a short walk or quick strength session. Consistency builds results, not occasional long, exhausting workouts done inconsistently.



BUILD A “MINIMUM STANDARD”

You have a busy, tiring day and feel tempted to skip everything, telling yourself you'll restart properly tomorrow when you have more time and energy available.

Switch to your minimum standard. Do ten minutes of movement, prioritise protein at one meal, and keep the habit alive without overwhelming yourself or quitting entirely.



EXPECT RESISTANCE AND NORMALISE IT

You wake up feeling unmotivated, convincing yourself it's a sign you shouldn't train today and that rest is the better option instead.

Recognise this as normal resistance, not a stop sign. Start small, knowing motivation often follows action rather than appearing before you begin.



FIT FIT HABITS INTO YOUR REAL LIFE

Your schedule is full with work, family, and commitments, leaving little time for long workouts or complicated meals, making healthy habits feel unrealistic and impossible to maintain.

Adjust your choices to fit your life. Shorten workouts, simplify meals, look for small windows of time rather than waiting for perfect conditions to appear.



FOCUS ON CAPABILITY, NOT JUST APPEARANCE

You feel discouraged when your body doesn't change as quickly as expected, focusing on appearance and comparing yourself to others, reducing motivation to keep going.

Shift focus to strength, energy, and mobility. Notice what your body can do today that it couldn't before, and let that progress motivate you to continue showing up.



SIMPLIFY FOOD DECISIONS

You feel overwhelmed by conflicting nutrition advice, unsure what to eat, leading to decision fatigue and defaulting to convenient, less nourishing choices when you're busy or tired.

Simplify your choices. Focus on protein, whole foods, and regular meals. Reduce decision fatigue by repeating simple meals you enjoy and can prepare easily.



TREAT SOCIAL CONNECTION AS A HEALTH PRACTICE

You consider skipping social plans to stay on track with eating or exercise, worrying that going out will disrupt your routine and slow your progress toward your goals.

Connection supports wellbeing.

Keep the plan and enjoy the moment, keeping up connections is more important than the occasional social occasion.



CHANGE YOUR SELF TALK ON HARD DAYS

After overeating or missing exercise, you criticise yourself, thinking you've failed again, which leads to giving up for the rest of the day or even longer.

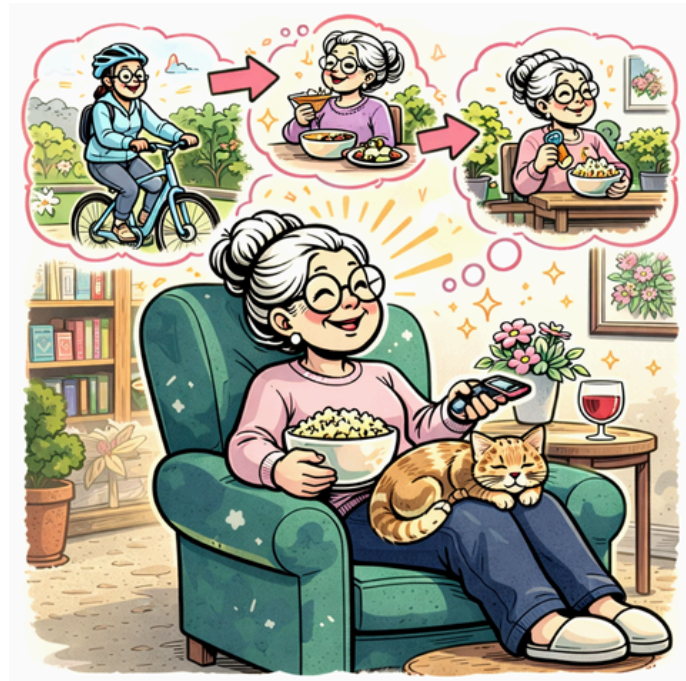
Speak to yourself with kindness. One off moment doesn't define you. Reset at the next opportunity and take a small positive action to rebuild momentum ASAP.



MAKE A LIFESTYLE YOU WANT TO RETURN TO

You feel restricted by your plan, avoiding foods and activities you enjoy, which makes you more likely to rebel, overdo things, and eventually stop altogether.

Adjust your choices and routine so it feels enjoyable and realistic. Include foods and activities you like, creating a lifestyle you want to return to consistently.



CONCLUSION

Manage your mind by observing thoughts without judgment and staying present.

On good days, practice gratitude and remain grounded.

On difficult days, accept emotions, slow your pace, and focus on small, meaningful actions. Build consistency through daily reflection, self-compassion, and awareness—these habits strengthen resilience, support emotional balance, and help you navigate life's highs and lows with clarity and calm.

